

Manual – TrueView Web Report™

Copyright © Cognimatics AB, 2007

Document history

| | |
|-------------------------|------------------------------------|
| September 10 2007, 1.00 | Initial version |
| November 19 2007, 1.0.3 | Time offsets, daily intervals |
| July 28 2008, 1.1.1 | Software versions, auto activation |

Overview

TrueView Web Report™ is a statistical package that works seamlessly with TrueView People Counter™. It transforms your counting data into graphs that allow you to quickly learn from your data. Use it to discover trends, patterns or, identify unusual performance. TrueView Web Report™ lets you unveil performance problems, and help you to take proper action to improve performance, enhance revenue, and increase profitability.

Requirements

TrueView Web Report must be installed on a computer that is running Microsoft Windows XP or Microsoft Windows Vista. The computer should be accessible from the Internet and have Java, PHP and MySQL support. Those applications are free, and instructions for installing them can be found in this manual.

A MySQL user account with all privileges is required. Installing and configuring Apache, PHP and MySQL separately can be a rather complex task. It is therefore recommended to use the merged installer called AppServ, which includes the Apache web server, PHP and MySQL, and does all the necessary configuration automatically.

AppServ (dated May 10, 2008) can be downloaded here:
<http://face.cognimatics.com/appserv-win32-2.5.10.exe>

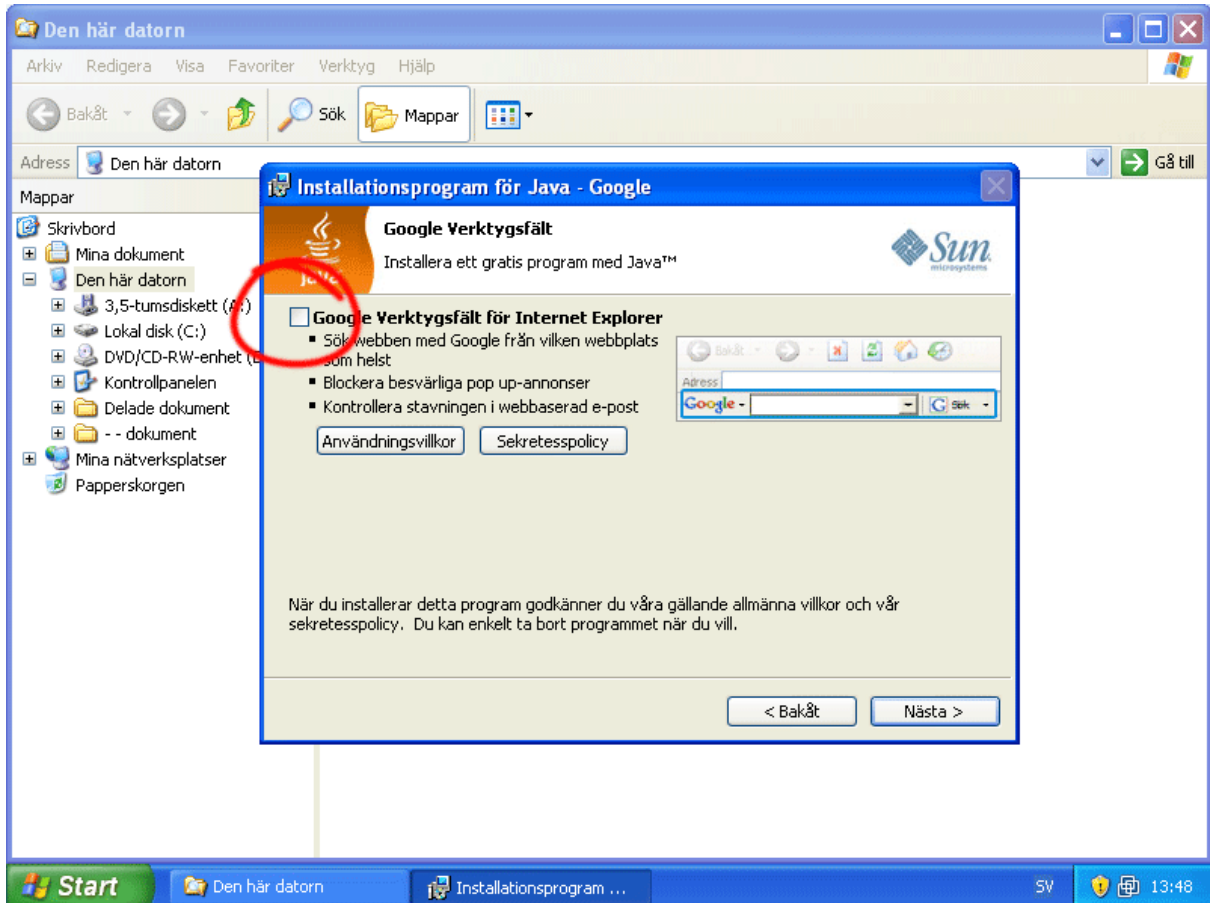
The latest version of AppServ can be found here:
<http://www.appservnetwork.com/>

Java must however be installed separately, an installer (dated 2008) can be downloaded here:
<http://face.cognimatics.com/jre-6u7-windows-i586-p-s.exe>

The latest version of Java can be found here:
<http://www.java.com>

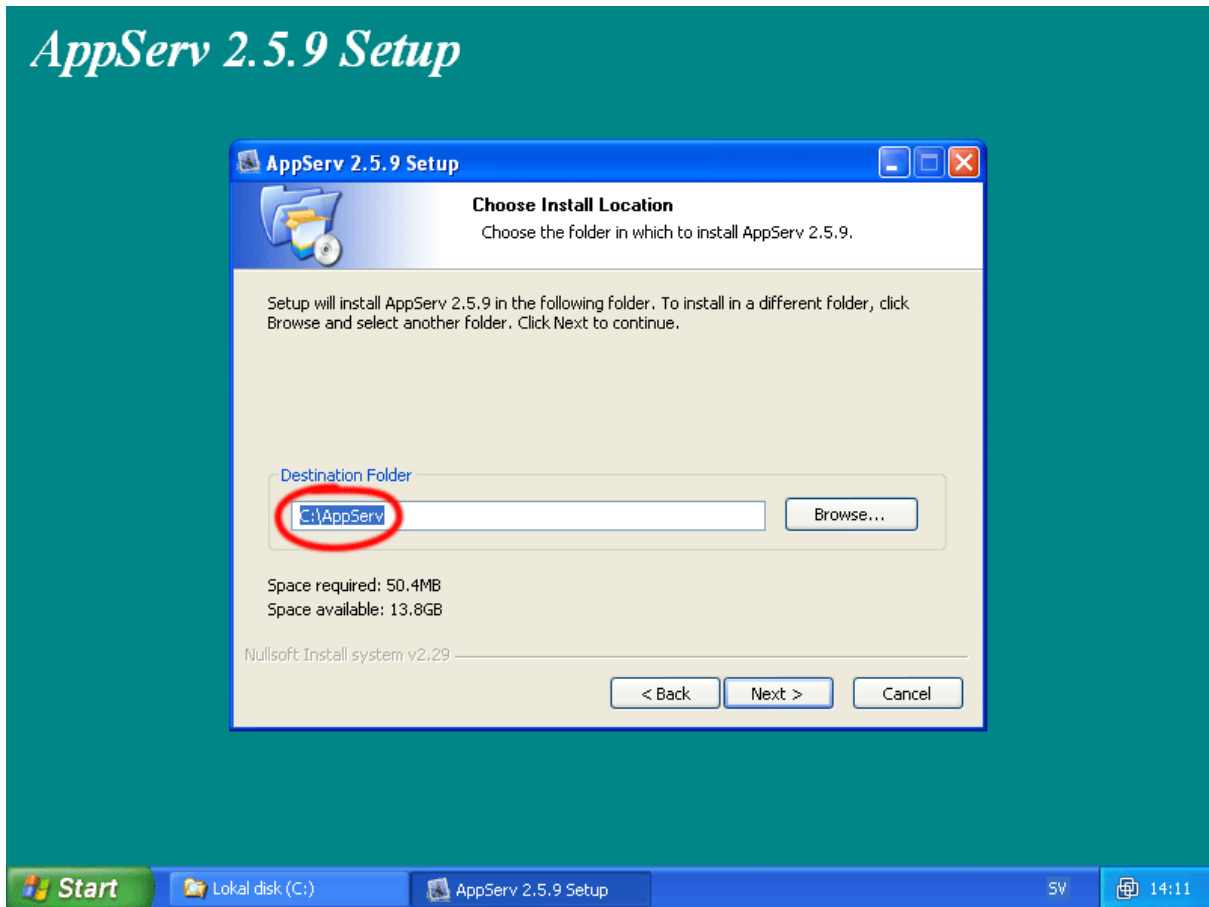
Installation

1) Install Java (see link above).



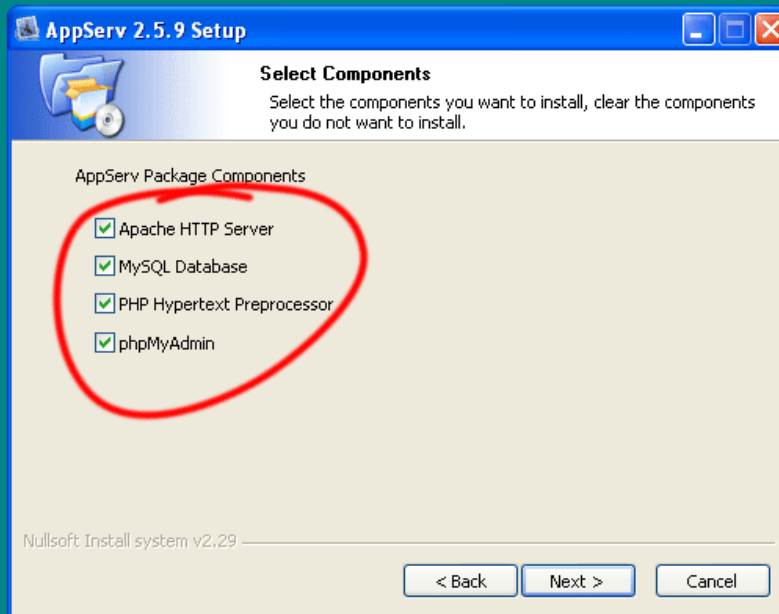
During the installation of Java, you might want to uncheck the box inside the red ring in the picture above, in order to avoid installing Google Toolbar for Internet Explorer.

2) Install Appserv, be sure to make the choices described below:



Make a note about the installation path (inside the red marking in the image above), you will need to know this path when installing Web Report.

AppServ 2.5.9 Setup



All components (inside the red marking in the image above) included in AppServ should be installed.

AppServ 2.5.9 Setup

AppServ 2.5.9 Setup

Apache HTTP Server Information
Please enter your server's information.

Server Name (e.g. www.appservnetwork.com)

Administrator's Email Address (e.g. webmaster@gmail.com)

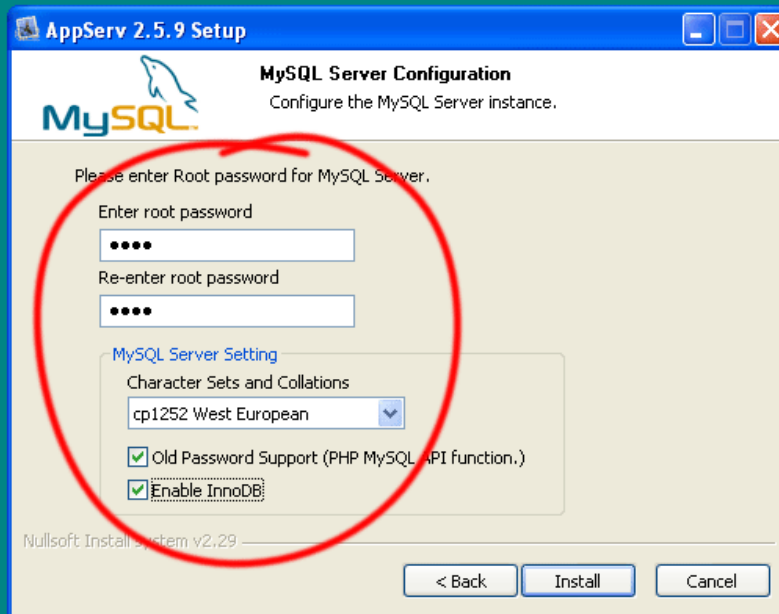
Apache HTTP Port (Default : 80)

Nullsoft Install system v2.29

< Back Next > Cancel

You can write whatever you want for Server Name and Administrator's Email Address, but the Port must be 80.

AppServ 2.5.9 Setup

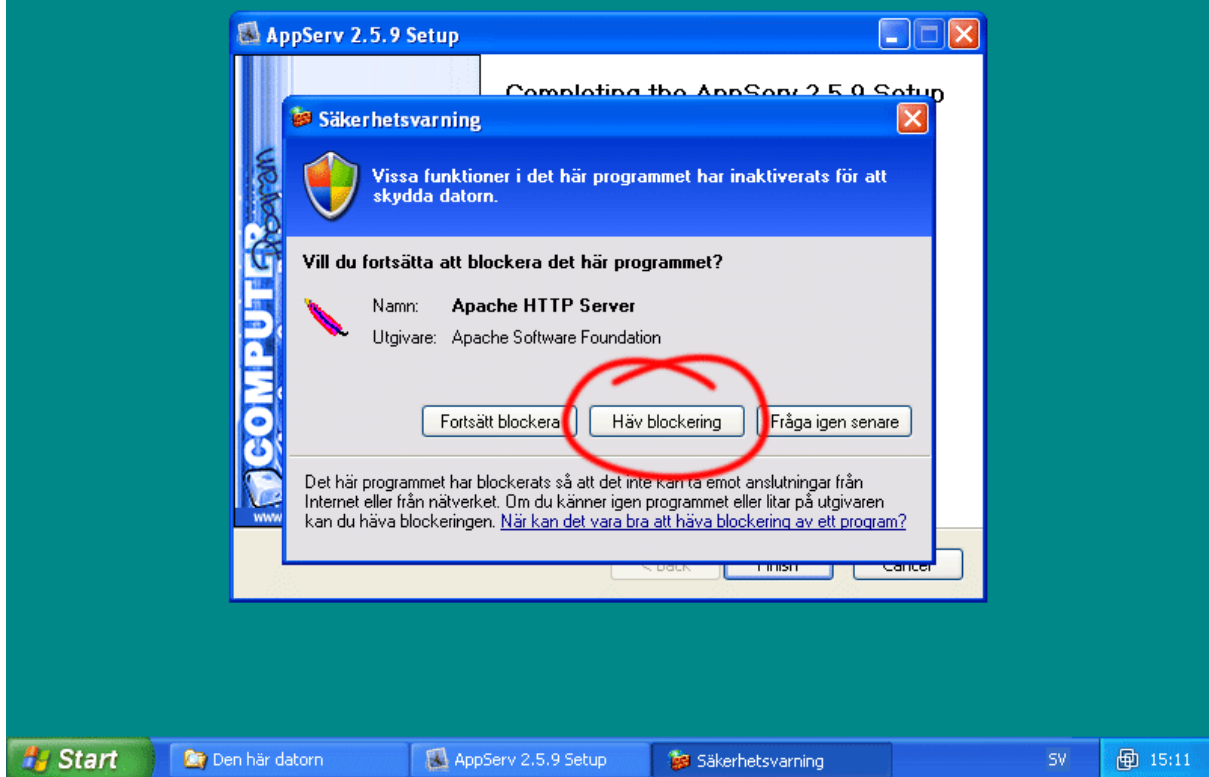


On this page, everything must be changed. You should enter a password and make a note of it, the password will be needed later when configuring Web Report. It is important that you choose the **cp1252 West European** character set, since UTF-8 will cause non-English characters to terminate strings. Non-latin characters cannot be used in Web Report no matter what character set you choose.

It is **very important** that you check the **Old Password Support** box, otherwise you will not be able to log in to Web Report in your Internet browser.

It is good to enable InnoDB, but it is not a requirement.

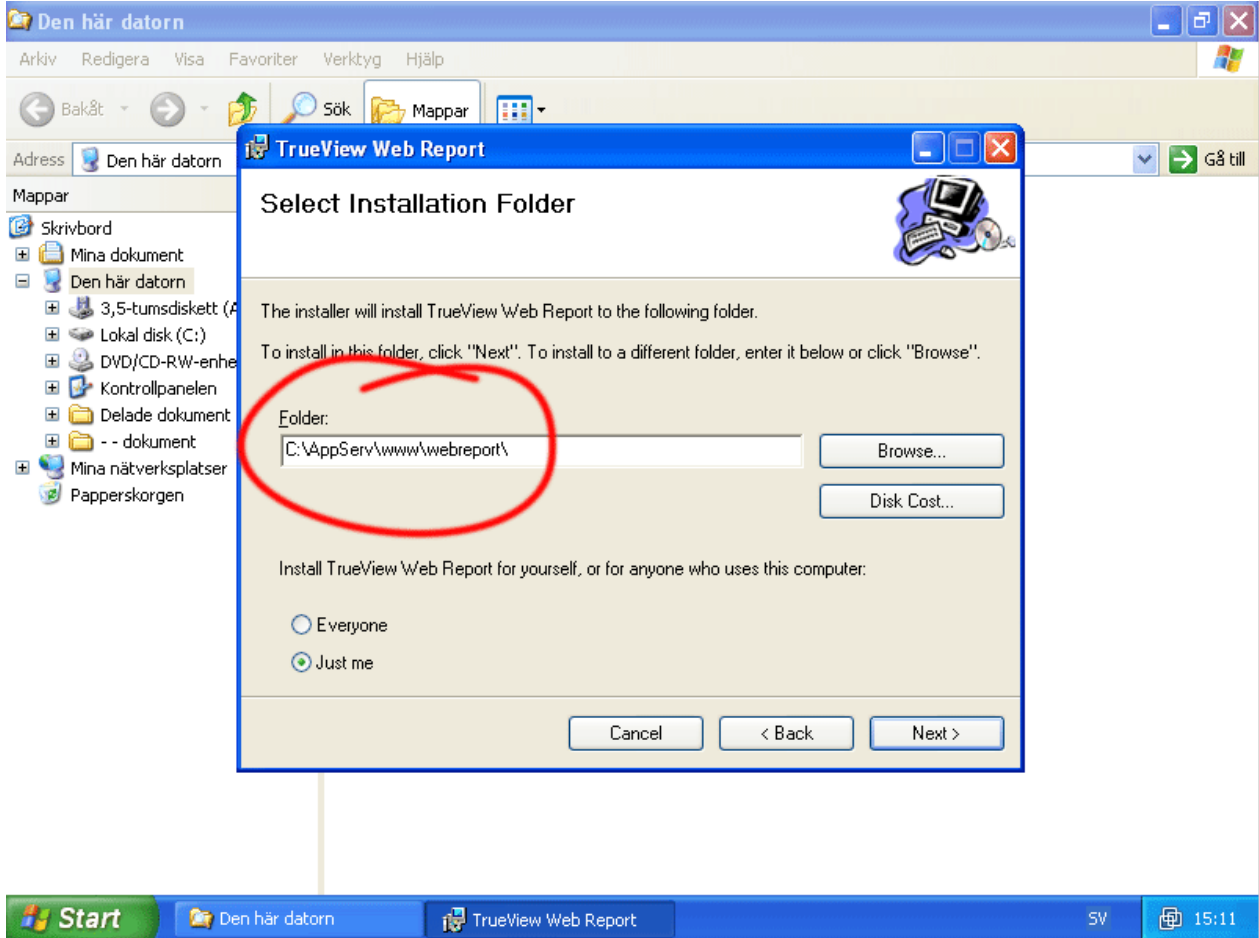
AppServ 2.5.9 Setup



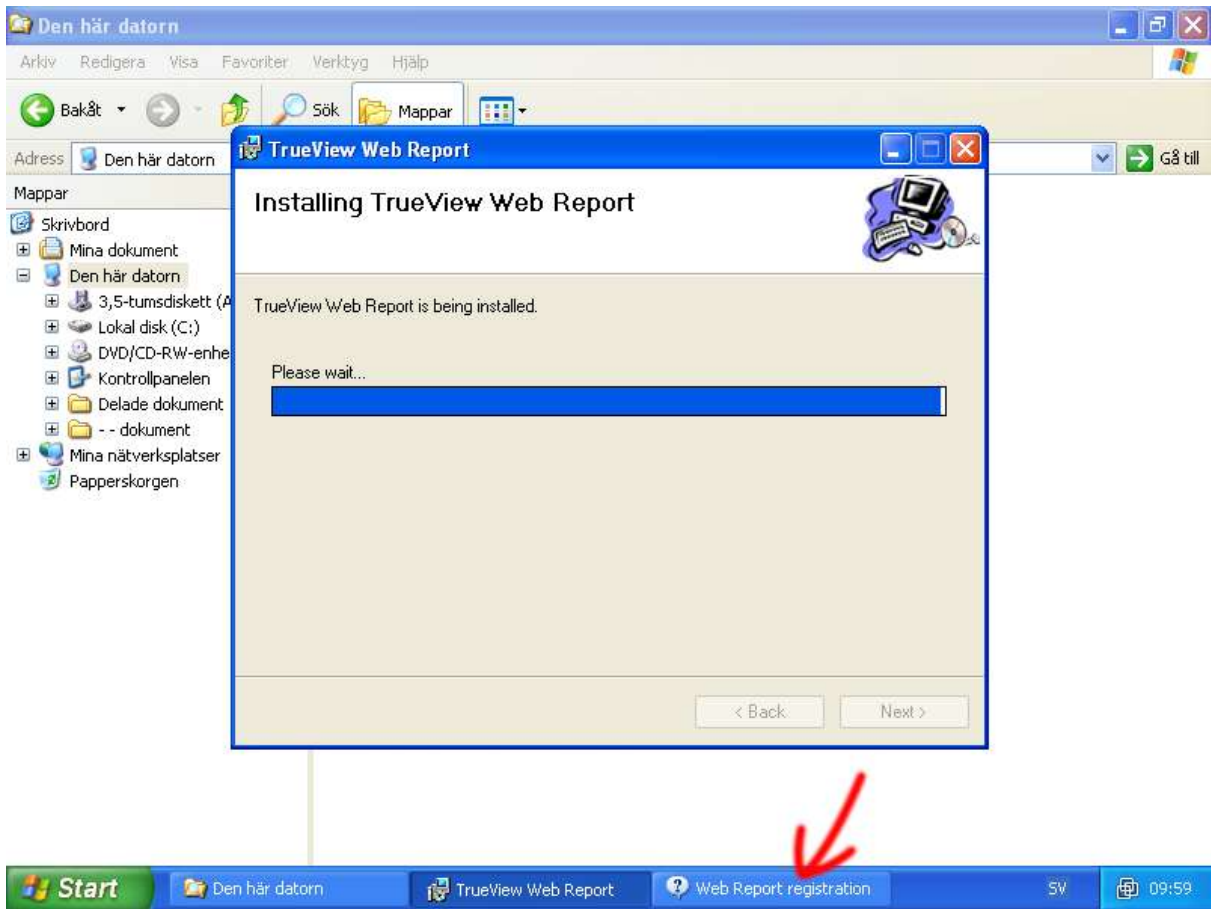
When you have pressed the **Install** button, all components will be installed. During the installation process you will be asked whether to block Apache from receiving requests over the Internet. It is important that you press the **Unblock** button, otherwise People Counters on other computers/cameras will not be able to send any data to Web Report and it will not be possible to view Web Report from a different computer over the Internet.

Make sure Apache and MySQL will be started. You might be asked to restart the computer. If so, do it. After that you can start installing Web Report (the file called SetupWebReport.exe).

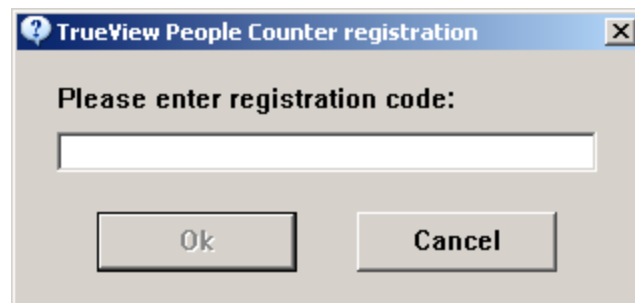
3) Install Web Report.



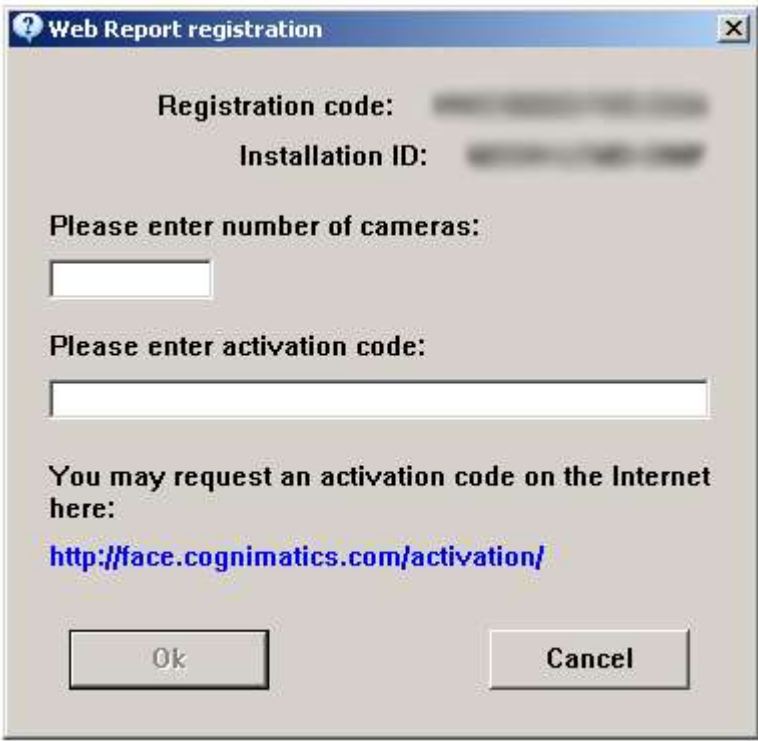
Make sure that Web Report is installed to a subfolder of AppServ. If you changed the default AppServ installation folder you will need to change the Web Report installation folder also.



A few steps later in the installation process you will be asked to enter a registration code, you will have received such a code when you bought Web Report. When the installation process is halted as shown in the picture above, you should be able to see the registration dialog (picture below). Otherwise it is hidden behind another window, please click on the task bar where it says **Web Report registration** (marked with a red arrow in the picture above).



The application will attempt to automatically activate the license over the Internet. If that fails, the activation dialog (see below) is shown. Click on the blue text (a hyperlink) to go to the activation page on the Internet. Submit the request to receive an activation code, enter that code into the activation dialog and press Ok. Your product is now installed and registered.



The image shows a Windows-style dialog box titled "Web Report registration". The dialog has a blue title bar with a question mark icon on the left and a close button (X) on the right. The main content area is light gray and contains the following elements:

- Registration code:** followed by a blurred text field.
- Installation ID:** followed by a blurred text field.
- Please enter number of cameras:** followed by a small, empty text input box.
- Please enter activation code:** followed by a larger, empty text input box.
- You may request an activation code on the Internet here:** followed by a blue hyperlink: <http://face.cognimatics.com/activation/>
- At the bottom, there are two buttons: "Ok" on the left and "Cancel" on the right.

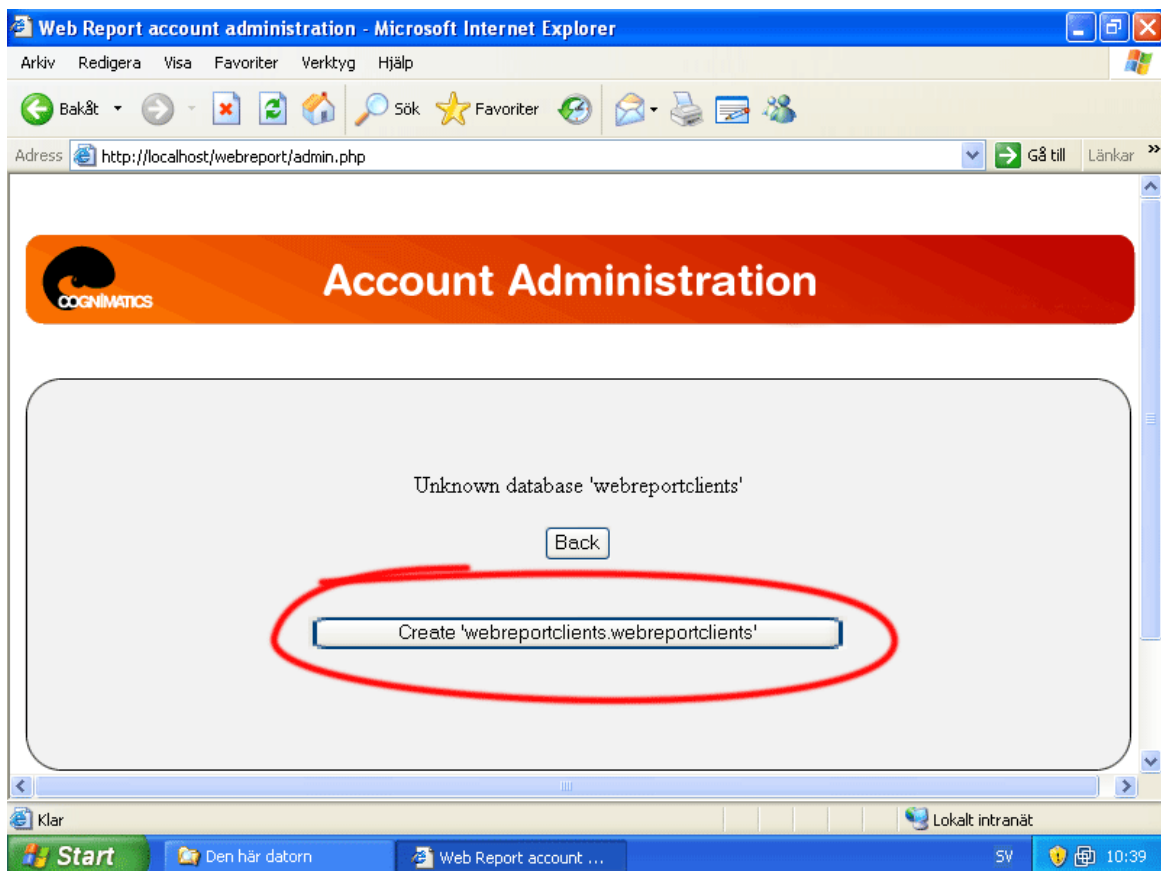
Configuration

Before Web Report can be used, it must be configured with user accounts, databases and tables. If Web Report was installed into a subfolder "webreport" to the AppServ "www" folder, the configuration page can be accessed on this URL from the local computer (replace "localhost" with the IP of the Web Report server if accessing from another computer):

`http://localhost/webreport/admin.php`

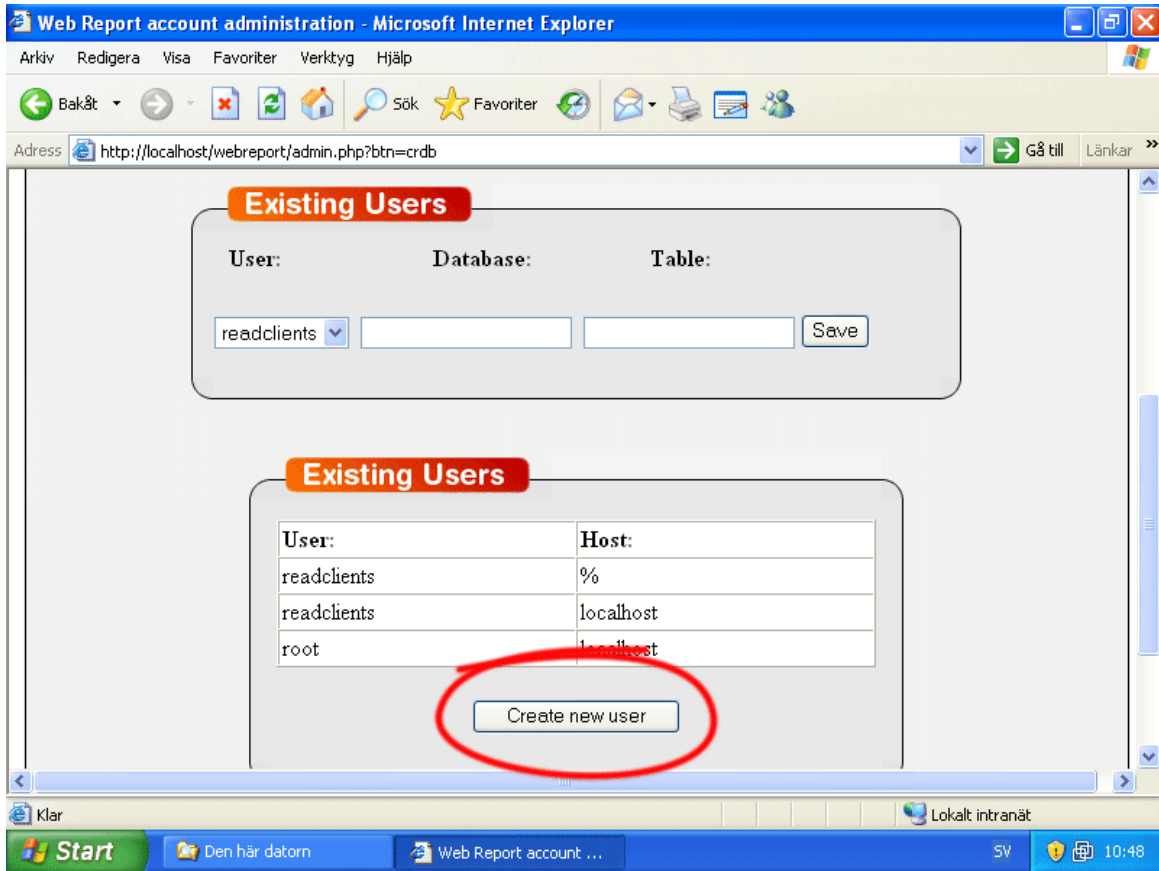
You will be asked for a user name and password. Enter "root" as username and then the MySQL root password that you created during the installation of AppServ.

The first time admin.php is accessed, this page will be shown:



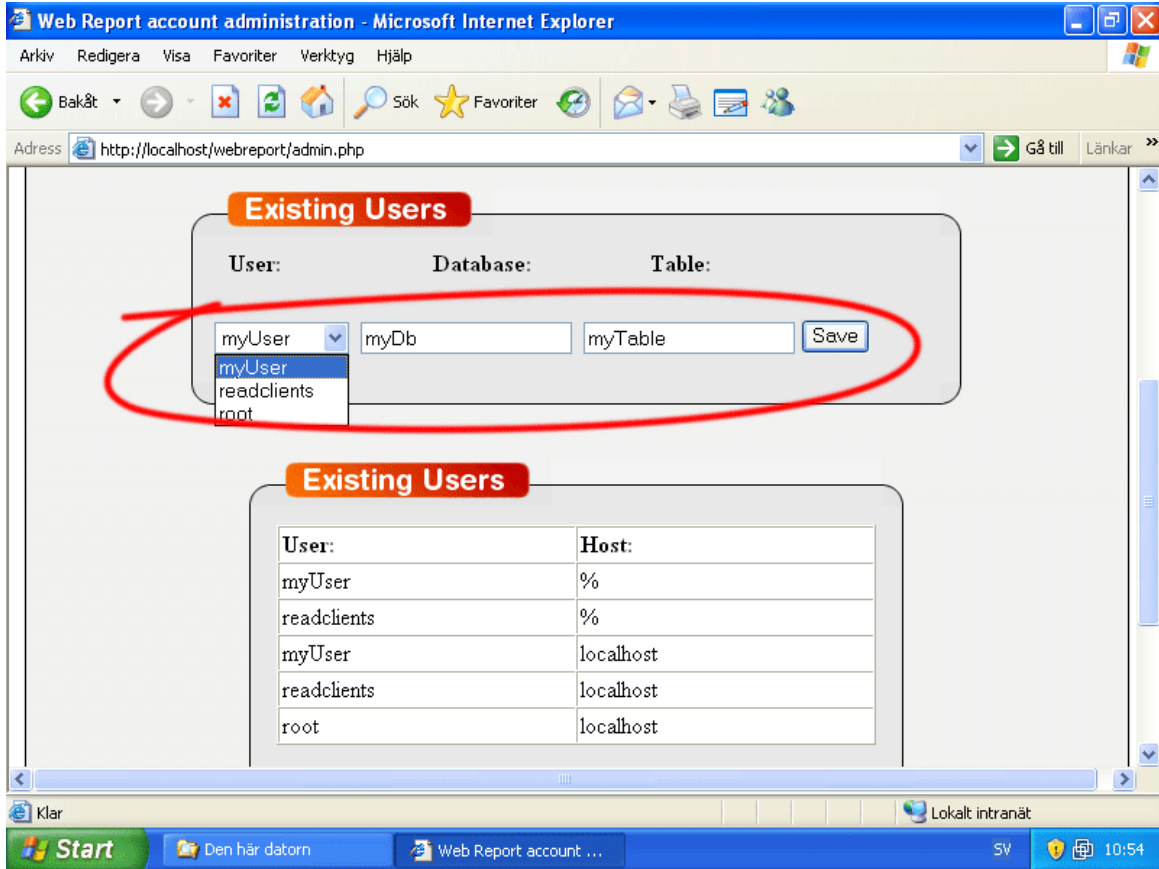
Just press the wide "Create" button to continue.

This is what the administration page looks like before creating any accounts:

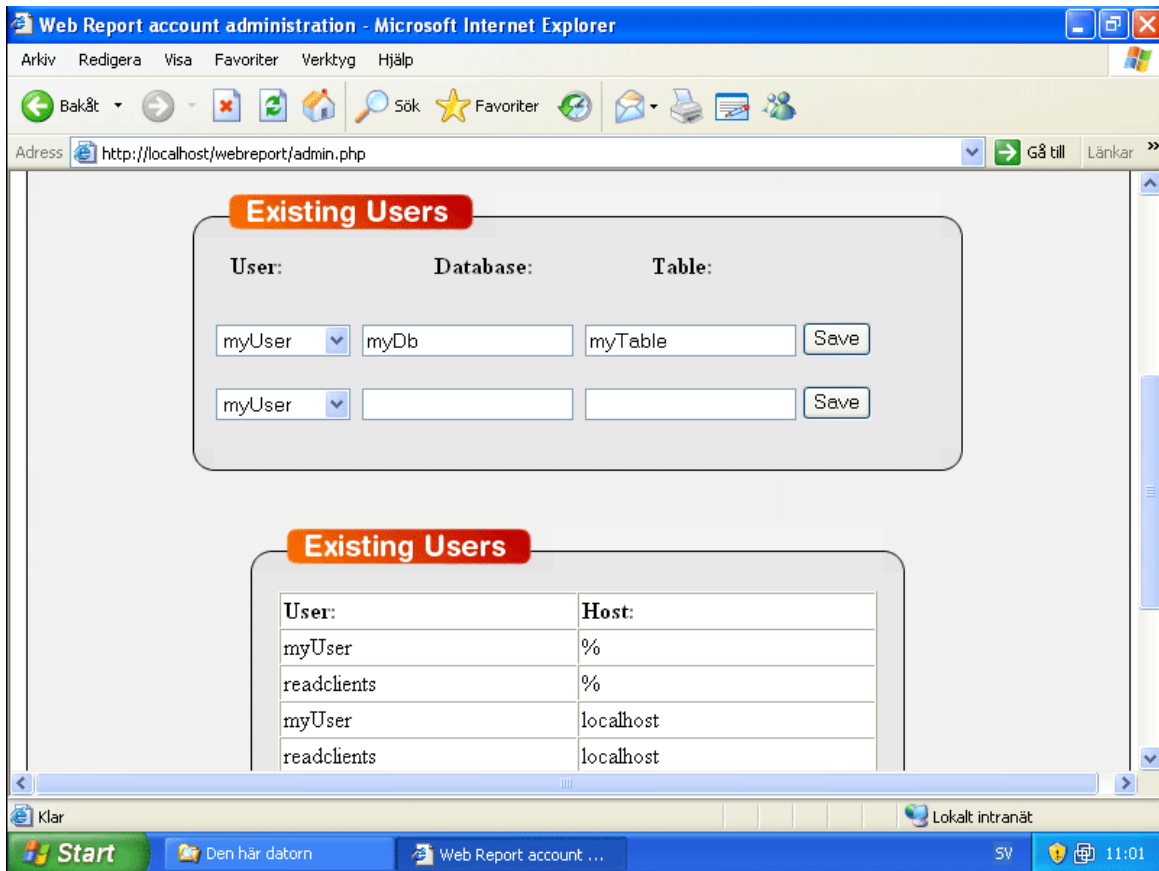


Press the "Create new user" button to create an account that can be used for sending and viewing data.

After creating a new user, select the user in the upper left pull-down menu and then enter a name for the database and table. Finish by pressing the "Save" button.



If the account has been created successfully, another row with empty database and table names will be seen below the first one:



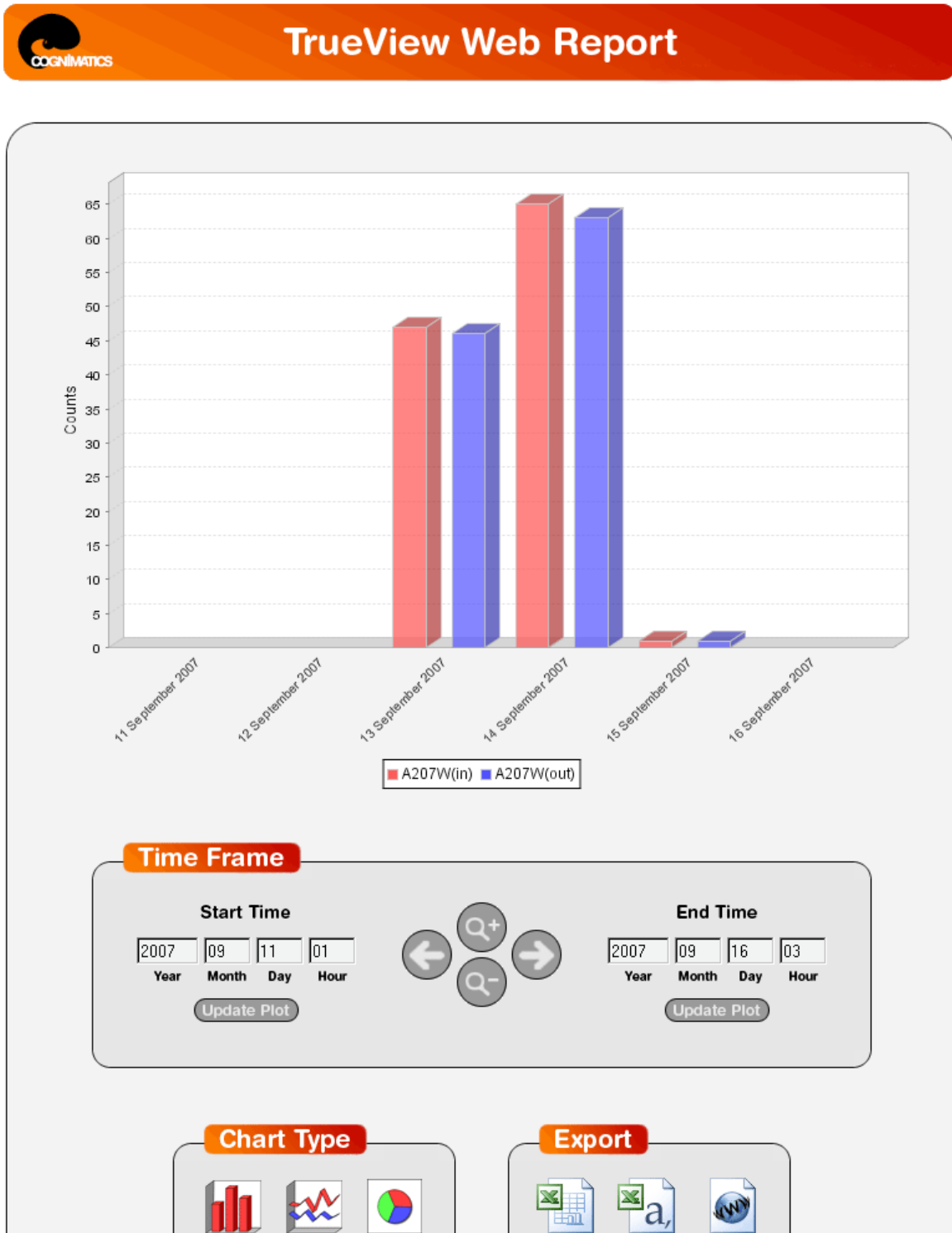
Using TrueView Web Report

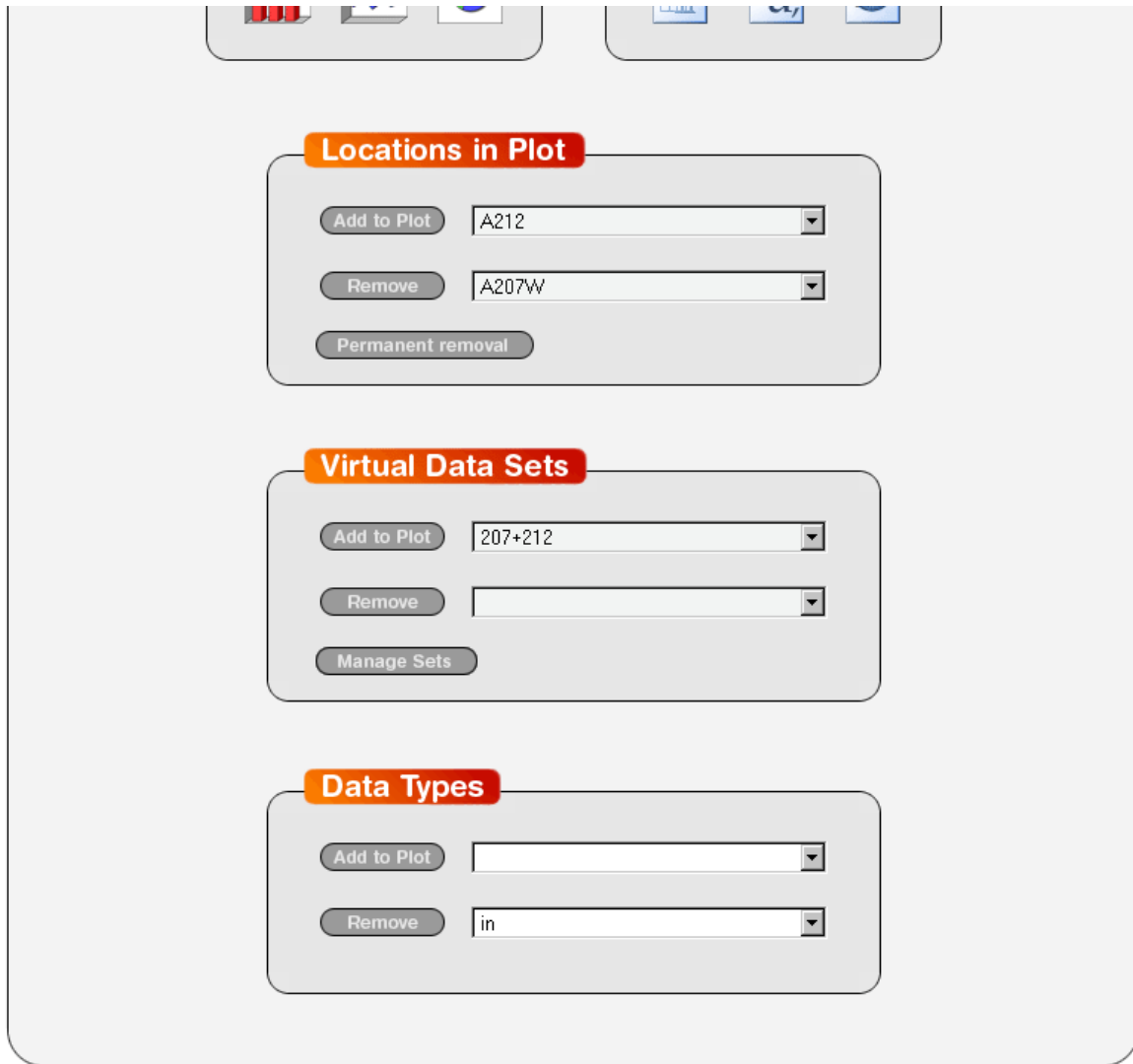
You are now ready to start using Web Report! Close down all Internet browsers so that your username and password is cleared from the cache. Then open an Internet browser again and go to this URL (replace "localhost" with the IP of the Web Report server if accessing from another computer):

<http://localhost/webreport/>

Enter the user name and password that you created on the administration page, not the "root" user that can be used to access the administration page.

Web Report can typically look like this after sending data to it for a few days:

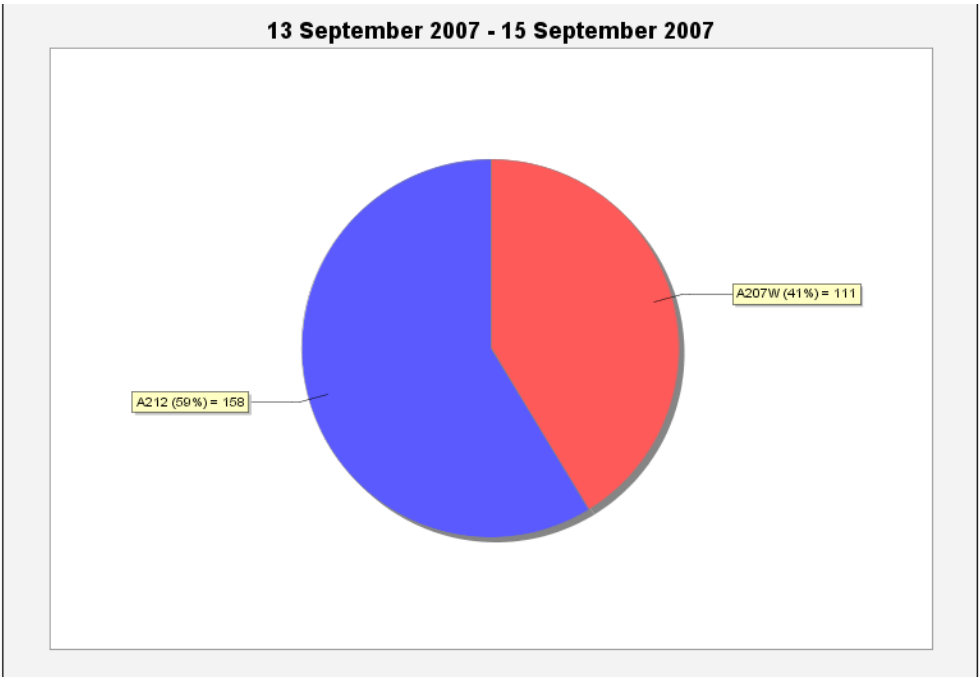




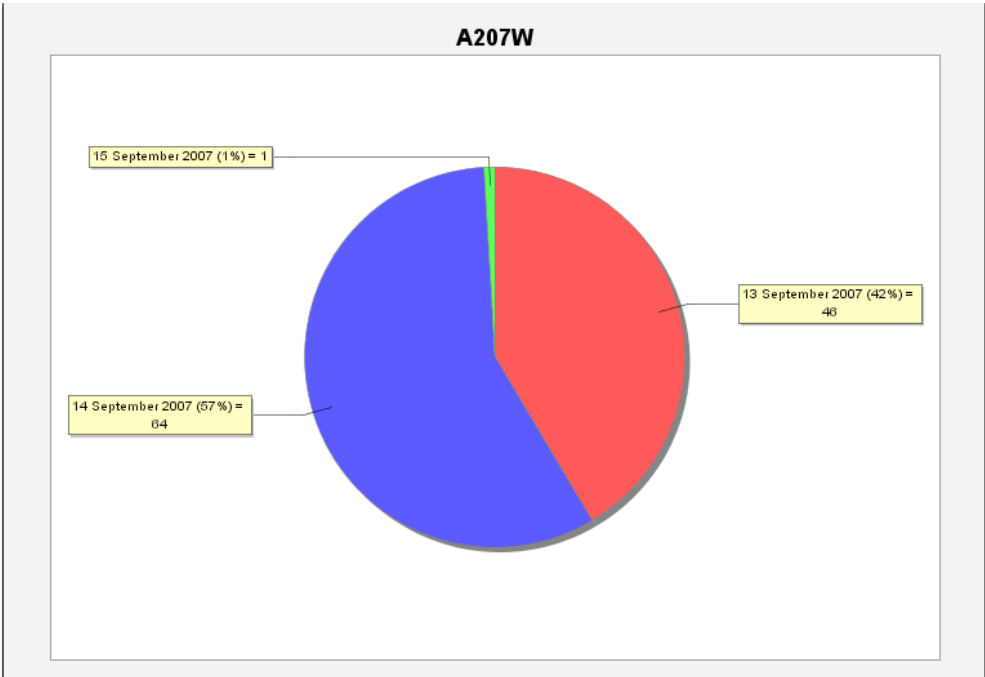
Use arrow and zoom buttons to change the graph view. There are also buttons for selecting graph type, exporting data, selecting currently visible graphs and managing virtual data sets.

True View Web Report only shows as many locations as you have paid for, surplus locations will be completely invisible until one of the visible locations is permanently removed. For security reasons, standard users cannot permanently remove locations. A user with MySQL "DELETE" permission for the database and table is required for permanent removal of locations.

When displaying several locations in a pie chart, data for **In** and **Out** will be merged so that only one color is shown for each location. The displayed values will be mean values of **In** and **Out**.




If only one location is to be displayed in a pie chart, different times will be given different labels instead of different locations being given different labels. **In** and **Out** data will be merged so that a mean value is shown.



Virtual data sets

A virtual data set can be a combination of any number of cameras, and can have a time offset (for e.g. comparing the data from a week with the previous week) and be limited to some daily interval of hours (for e.g. comparing afternoon-data in a week). Press the **Manage Sets** button in the **Virtual Data Sets** area to bring up this screen:



Virtual Data Sets

Existing Sets

| Set Name | Locations | Actions |
|------------|---------------------------------|-------------|
| all | win2 win7 win7 (1) win7 (1) (1) | Delete Edit |
| almost all | win2 win7 (1) | Delete Edit |

Create New Set

Edit Set

Name:

Offset:

Months Days Hours

Daily interval:


Start hour: End hour:

win2
 win7
 win7 (1)
 win7 (1) (1)

Save Cancel

Back

PERSONAL AND INDUSTRIAL SOFTWARE APPLICATIONS

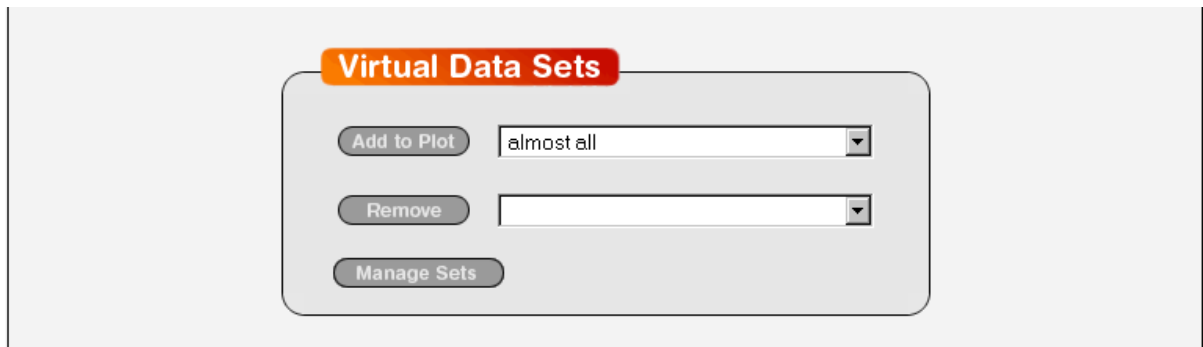
WHEN AN IMAGE IS NOT JUST AN IMAGE 

On the **Virtual Data Sets** screen you can edit or create new virtual data sets. A virtual data set must include at least one location (the check boxes in the lower part of the **Edit Set** or **Create Set** area), otherwise it will not be accepted.

Positive offsets will move the data to the right in the graph. The daily interval is regarded before any offsets. For example, if the offset is two hours and the daily interval is 15-16 then data for hours 15 and 16 will be shown, but the offset will cause it to be shown at hour 17 and 18 in the graph.

In the event that a virtual data set contains a location that later becomes invalid (if the location is permanently removed or no longer being displayed due to a lack of licenses (number of visible locations is limited by the number of TrueView Web Report licenses you have)), that virtual data set will no longer be visible on the main (graph) screen. But it will be visible on the **Virtual Data Sets** screen so that you can remove the invalid locations in order to make the virtual data set visible on the main (graph) screen again.

When you are finished on the **Virtual Data Sets** screen, press the **Back** button (bottom of screen) to return to the main (graph) screen. The newly created virtual data sets will be visible in the **Virtual Data Sets** area so that you can add them to the graph:



Data export

Data exported to Excel (left-most icon in **Export** area) and WWW (right-most icon in **Export** area) will reflect what is currently shown in the graph. Change the graph view in order to change what data to export. Labels and sums will be exactly like in the graph.

On the other hand, data exported as CSV (Comma Separated Values) files will reflect the way that the data is saved in the database. This way, data can be seen in higher precision than in Web Report since data is typically saved to the database once every five minutes. The location names seen in CSV files will only be the original ones saved in the database, no virtual data set names will be seen. Virtual data sets will be divided into their camera components in CSV files. Time offsets and hour intervals will not affect the data in CSV files, all data for the chosen cameras between the start time and the end time will be shown.